

A.

, ,



**El Paso County
Agenda Item Details**

Item Title: Public Works/Infrastructure - Presentation re. Paving Operations.

Submitted By: Fernando Hernandez, Director

Department: Infrastructure

Department Phone Number: 915-273-3330

Subject: Receive a presentation from the Public Works Department of Infrastructure Services on paving operations.

Background: Provide the Court and the new members a summary of the paving operations that the department does on a yearly basis. This is just an overview of the paving operations and the department's targeted goals.

Fiscal Impact: Fiscal Impact Historical
N/A

Fiscal Impact Projected
N/A

Long Account Number: Amount:

Long Account Number: Amount:

Budget or Unbudgeted Match:

Recommendation: No action needed

Prior Action:

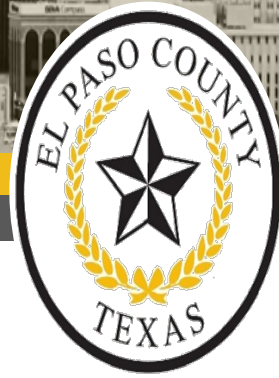
Strategic Plan: Goal:

null

Objective:

Strategic Plan Information:

**Estimated Time Needed
For This Item:**



DEPARTMENT OF INFRASTRUCTURE SERVICES

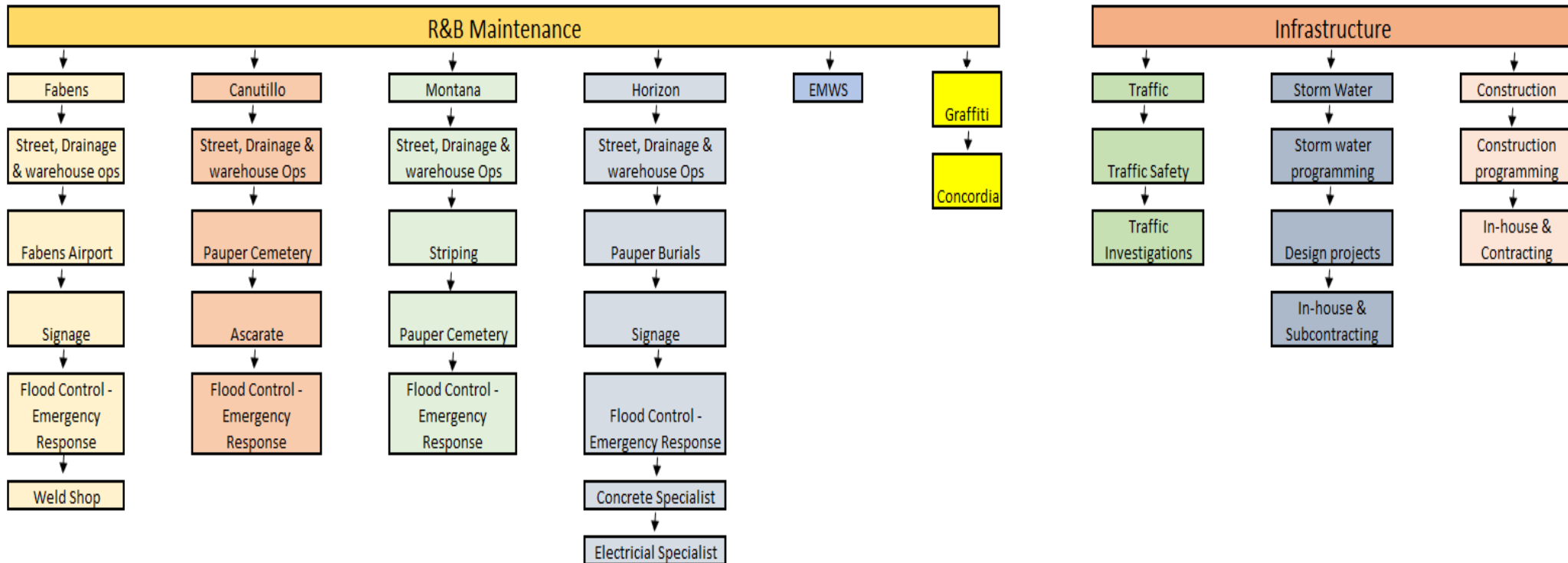
-

PAVEMENT PROGRAM

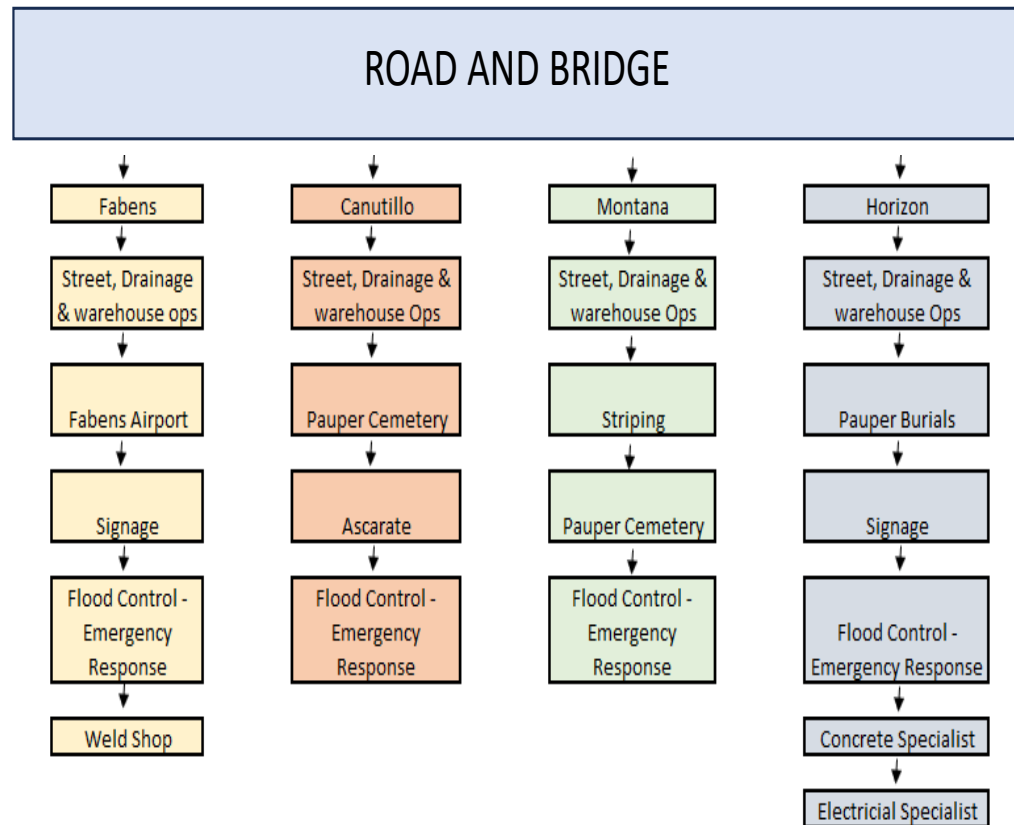
A DIVISION OF PUBLIC WORKS – EL PASO COUNTY

DEPARTMENT OF INFRASTRUCTURE SERVICES

Department of Infrastructure Services

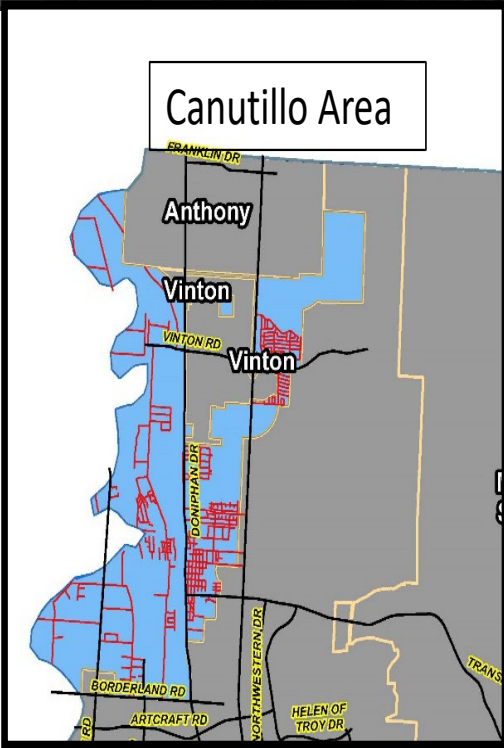


DEPARTMENT OF INFRASTRUCTURE SERVICES



R&B Warehouse Coverage

Canutillo Area



Street Signs



6.5k

Street Name Signs



3.6k

Centerline



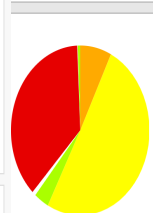
687.2 miles

Maintained by the County

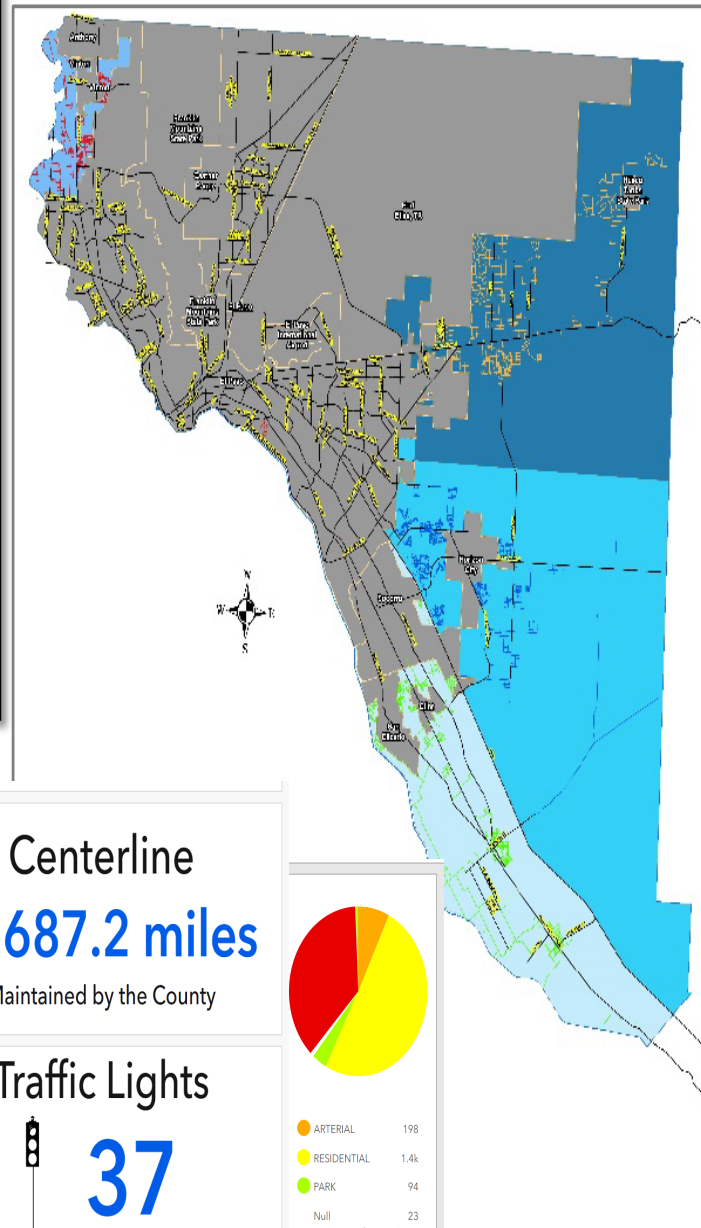
Traffic Lights



37



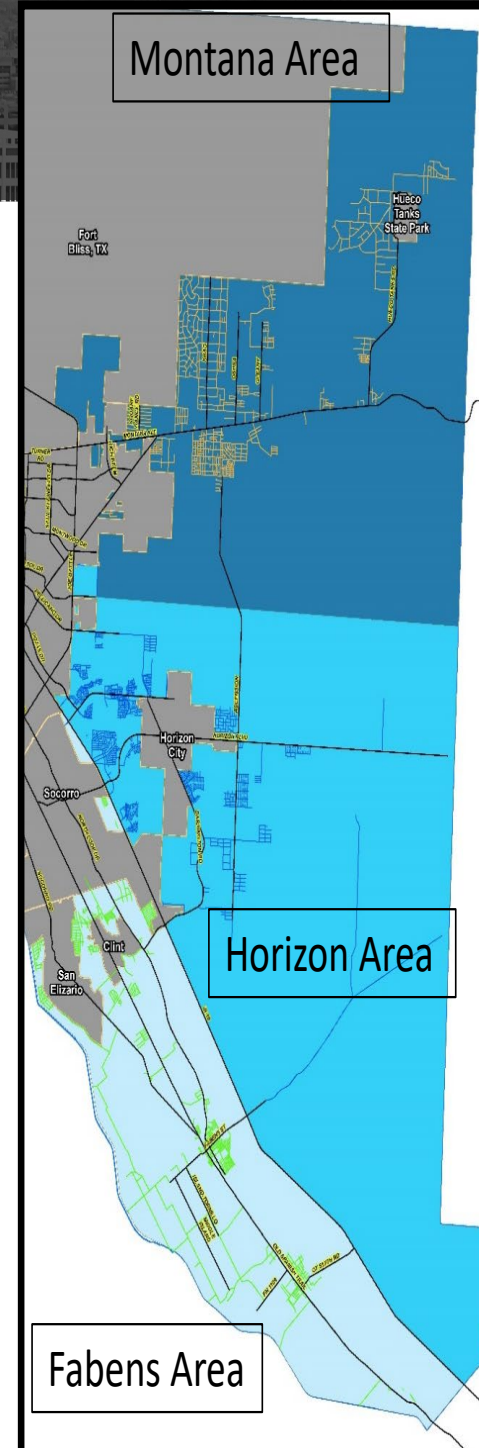
Arterial	198
Residential	1.4k
Park	94
Null	23



R&B:

- Pavement preservation method to 10%
- Overlay of roadways
- Chip seals
- Fog seals
- Maintain streets signs
- Maintain streetlights
- Maintain stormwater
- Clean arroyos
- Clear culverts
- Maintain irrigation crossings
- Clear inlets and manholes
- Maintain underground chambers
- Clear low water crossings
- Clean up urbanized flooding issues
- Maintain bridges
- Maintain airport

Montana Area



Horizon Area

Fabens Area

County Roadway Network

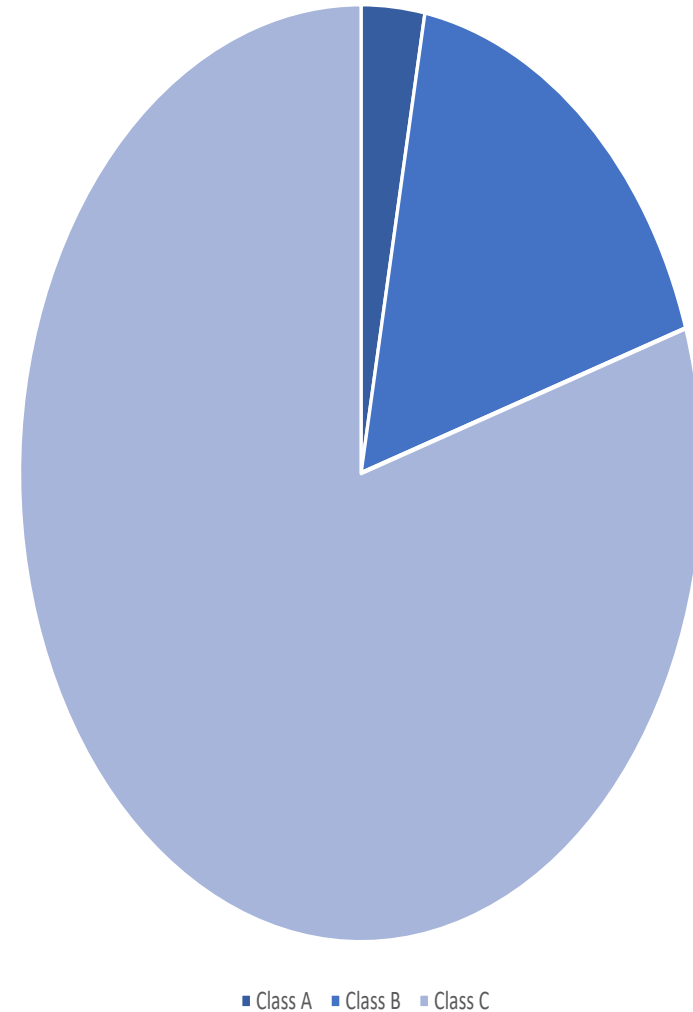
- County Network consists of:

- 1,300 different roadways
- 687 center line miles
- 3 Road Classifications
 - Class A Roads – 3%
 - Class B Roads – 17%
 - Class C Roads – 80%

- Water Crossings

- Bridges – 20
- Culverts (Major) – 13
- Pipes (Minor) – 95
- Low Water – 138

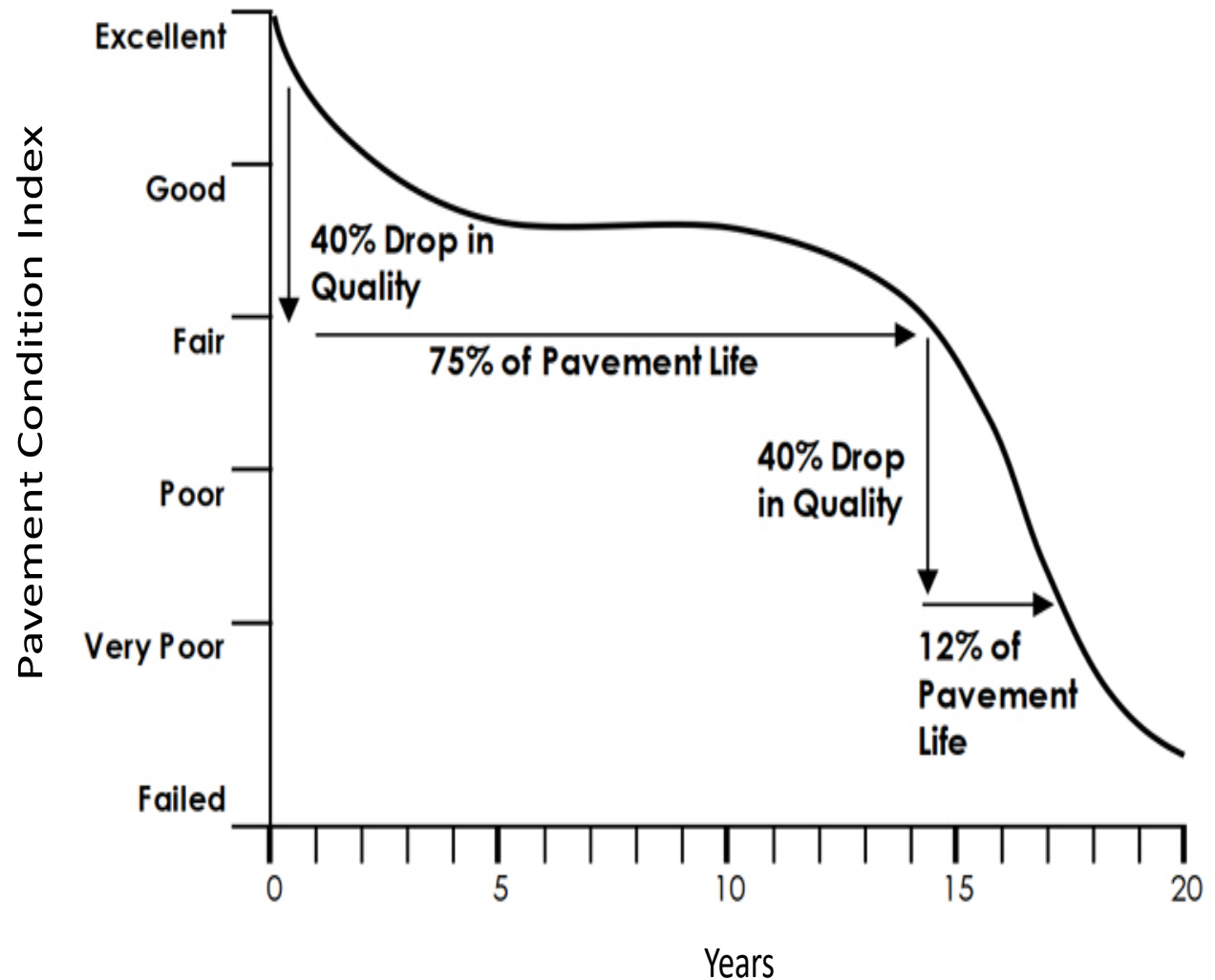
County Roadway Network



Customary Practices

Traditional Option

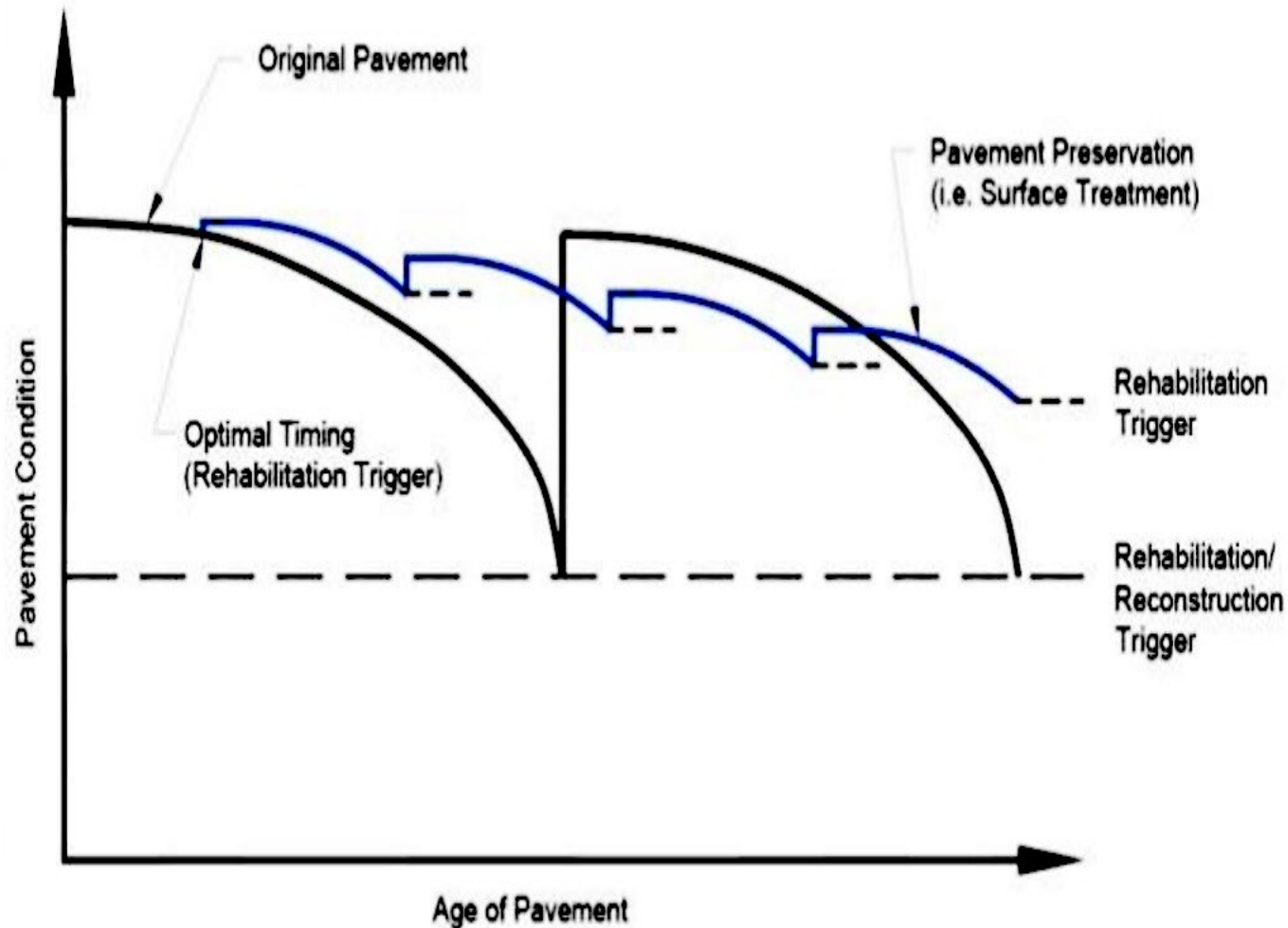
- Street Construction
- Typical 20 year life span (17 years)
- Very Minimal Maintenance
- Differed Costs
- Reconstruction



Paving Program

Pavement Preservation Methods Model

- Street Construction
- Identify method needed
- Extend Life of Pavement
- Lower Costs through duration of life
- Maintain integrity



Paving Program

GOALS:

- Maintain entire roadway network
- Implement Pavement Preservation Method (PPMs) on 10% of network yearly
- Extend Pavement life of roadways
- Maximize Funds to improve network
- Plan for “End-of-Life” segments

Crack Sealing



Chip Sealing



Fog Sealing



Overlay



Slurry Sealing



County Network

■ Pavement Condition Index

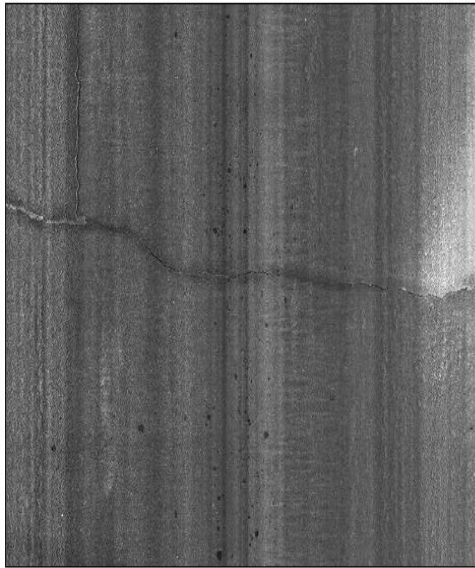


Figure 6: Pavement Image Example

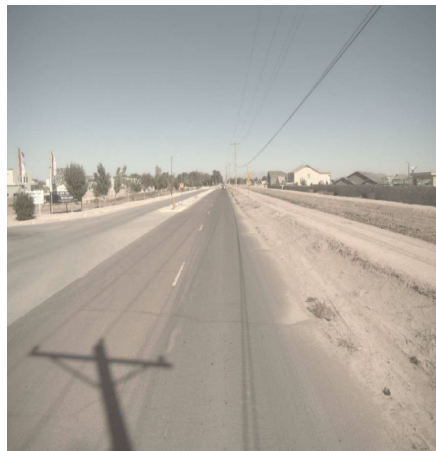
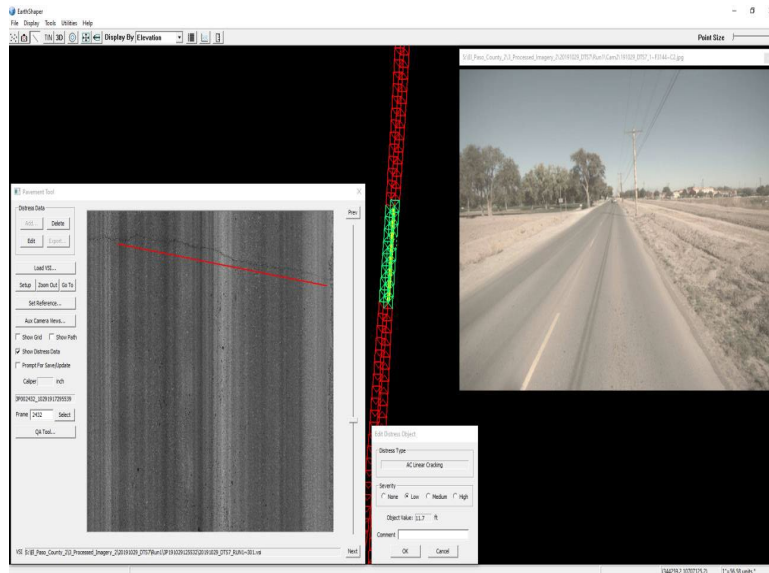


Table 1: ASTM D6433-11 PCI Condition Groups

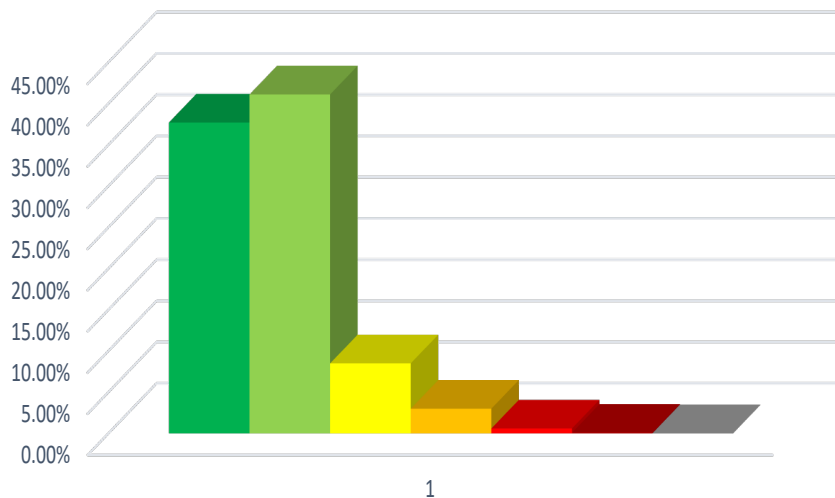
PCI Range	Condition Description
86 - 100	GOOD
71 - 85	SATISFACTORY
56 - 70	FAIR
41 - 55	POOR
26 - 40	VERY POOR
11 - 25	SERIOUS
0 - 10	FAILED

County Network

■ Pavement Types

- Concrete Paved Roads – 1%
- Asphalt Paved Roads – 90%
- Gravel Unpaved Roads – 6%
- Dirt Roads – 3%

**El Paso County Roadway
Pavement Condition Index**

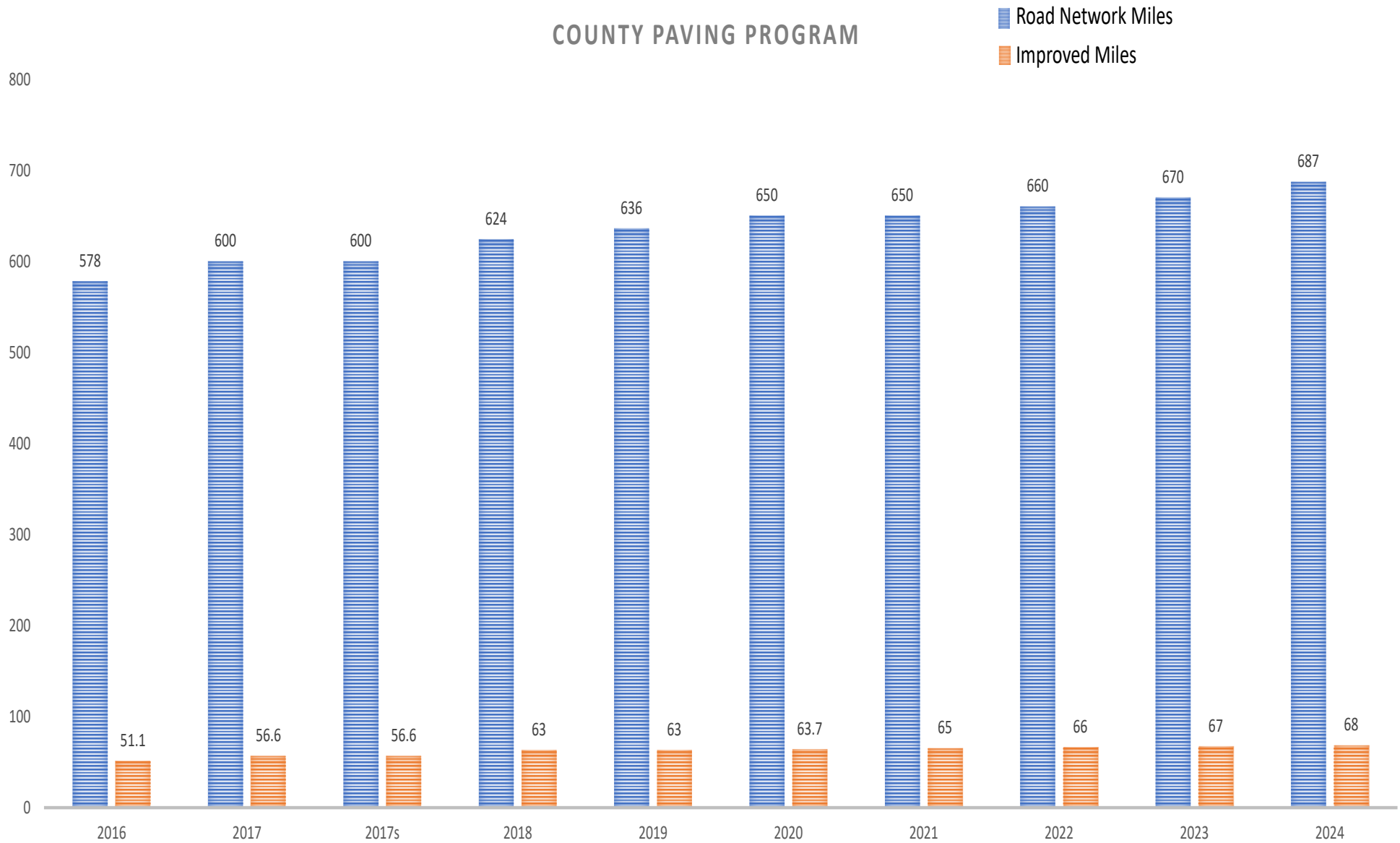


PCI Range	Condition Description	Percent of Network	
86-100	Good	37.70%	78.80%
71-85	Satisfactory	41.10%	
56-70	Fair	8.50%	11.50%
41-55	Poor	3.00%	
26-40	Very Poor	0.60%	
11-25	Serious	0.08%	
0-10	Failed	0.02%	
Null	Unclassified	9.0%	

- County Roads (Paper Plat Roads) not in Network
 - Dirt Roads – 1,825 miles of unpaved/undeveloped roads county wide

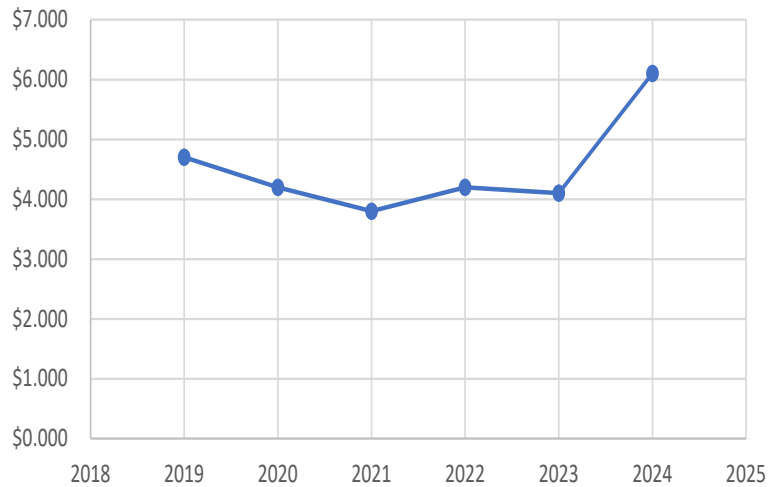
Paving Program History

COUNTY PAVING PROGRAM

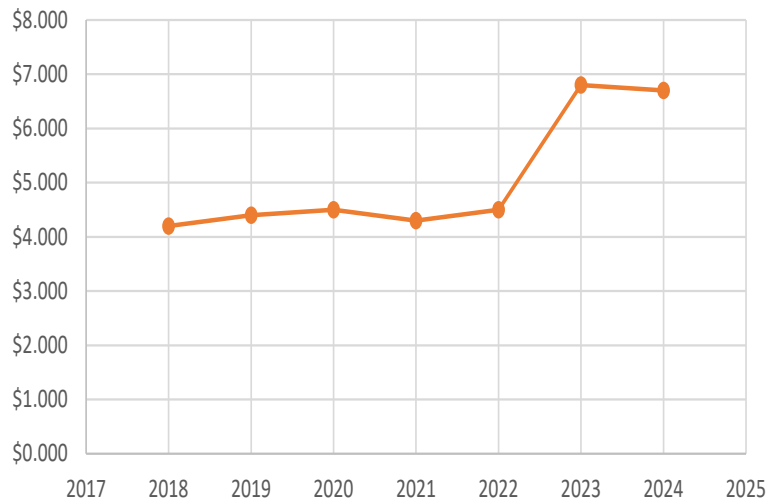


Operations

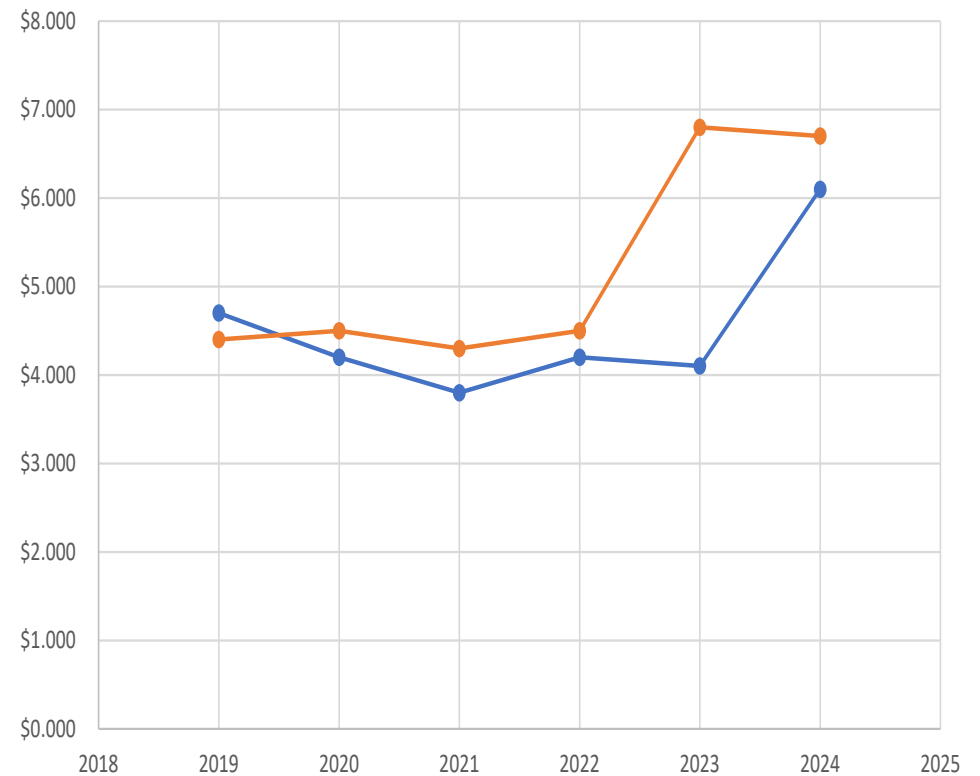
Paving Budget
(In Million Dollars)

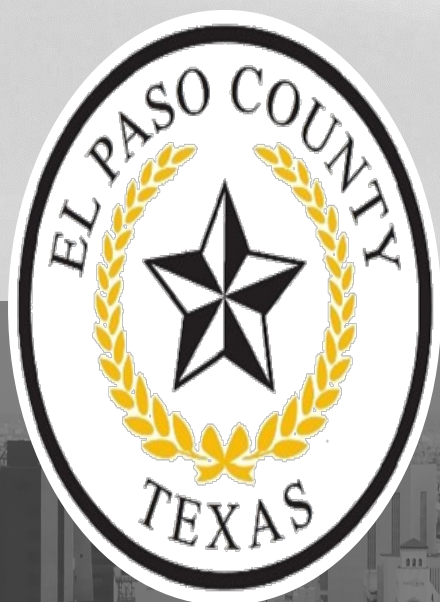


Paving Costs
(In Million Dollars)



Budget vs. Cost





Thank you